

NW 1/4
SECTION 29, T.6N., R.2W., S.L.B. & M.

TAXING UNIT: 53,377

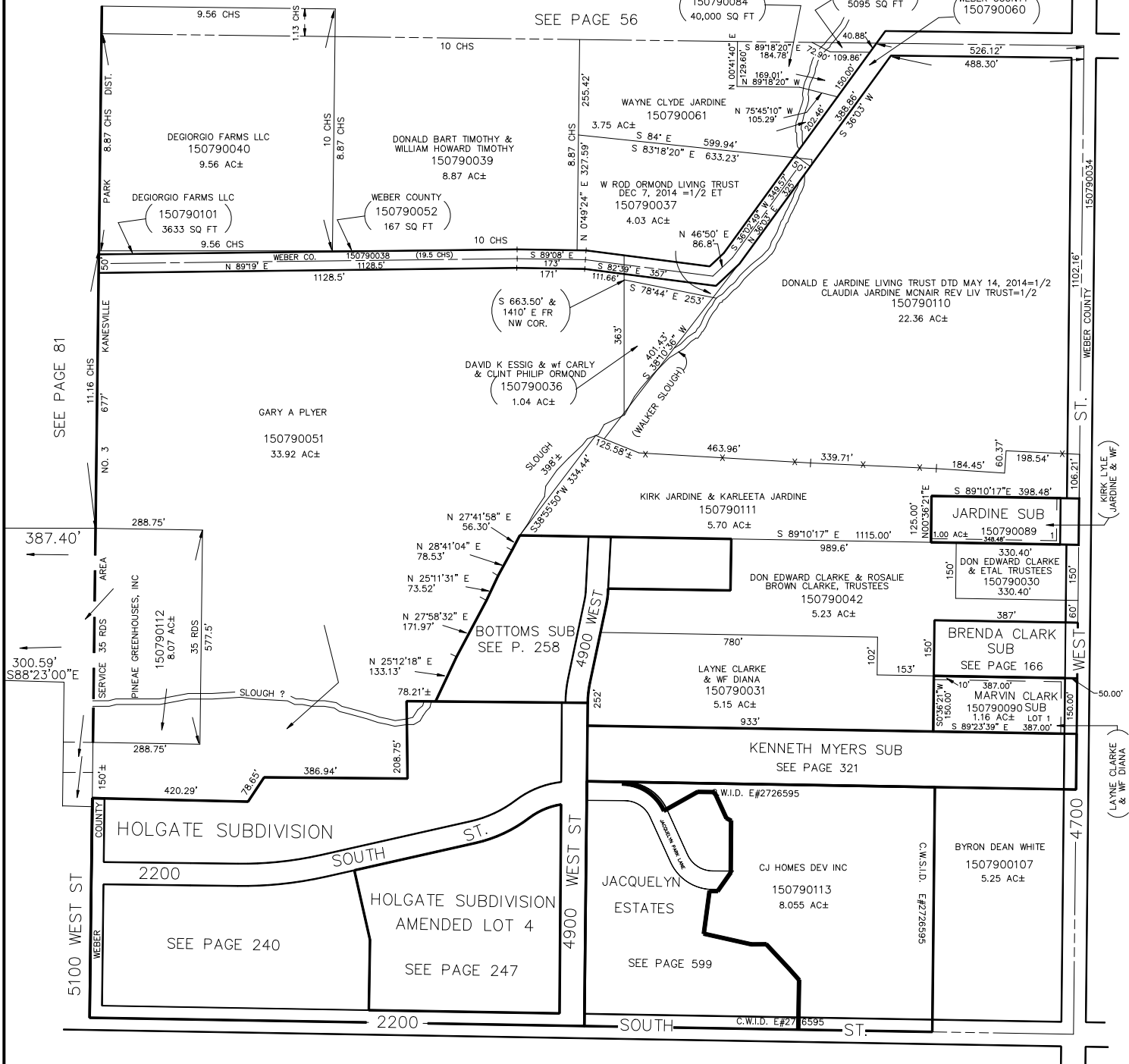
IN WEBER COUNTY
SCALE 1" = 200'

SEE PAGE 56

WAYNE C JARDINE
150790084
40,000 SQ FT

WAYNE C JARDINE
150790085
5095 SQ FT

(WEBER COUNTY 150790060)



SEE PAGE 79-2